



ITB
CHINA

The Market-
place for
China's Travel
Industry



ITB CHINA 2024 STAND PRICE BOOK

27 – 29 MAY 2024 | SHANGHAI | ITB-CHINA.COM

CO-HOST

环球旅讯
TravelDaily

ORGANIZER



Messe Berlin
Shanghai



BOOTH PACKAGES



RAW SPACE

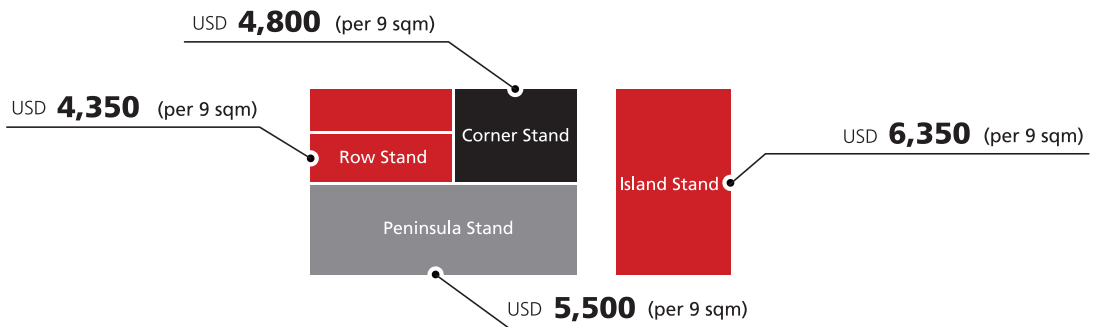
Set up your own individual booth construction with a raw space option choose your stand type with one-, two-, three- or four-sided accessibility. Included in the price are 21 pre-scheduled appointments with buyers per 9 sqm space.

Raw space options are only available from 18 sqm and larger. For raw space of more than 400 sqm, the row stand price applies.

Double storey stands will be subject to an additional charge of US\$ 110 for each square meter of the upper structure.

5% discount:
until 30 November 2023

Registration deadline:
until 31 January 2024



*All prices in USD are quoted excluding applicable taxes.

COMPLETE STAND PACKAGE

Carefree participation with ready-made booth construction, including furniture, carpet, lighting, electricity and 21 pre-scheduled appointments with Chinese buyers per 9 sqm space. Premium packages include graphic options, upscale design elements and furnishings.

Basic from
USD **4,575**

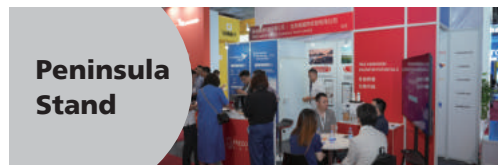
Premium from
USD **5,750**



Row Stand



Corner Stand



Peninsula Stand



Island Stand

*All prices in USD are quoted excluding applicable taxes.

*These are reference pictures. The exhibition booth pictures for 2024 will vary.

COMPLETE STAND PACKAGES

Row Basic Shell Scheme

9 sqm

USD 4,575

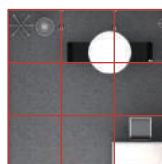
The Basic Shell Scheme includes the following:
Octanorm system walls, 34 cm red fascia panel with company's name and standing out booth number. Carpet color is grey.

- 1 Lockable information counter
- 1 Barstool
- 1 Round discussion table
- 2 Black Shared Acrylic Chairs
- 1 Waste paper basket
- 1 Free-standing coat hanger
- 1 13amp/220V power point/3-pin multiplug
- 3 100W longarm spotlights

- * Digital print RMB 140/sqm
- * Digital print on PVC RMB 205/sqm (max high 2.5mH)



Top View



Front View



814 Grey



Row Basic Shell Scheme

18 sqm

USD 9,150

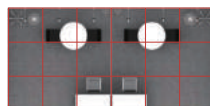
The Basic Shell Scheme includes the following:
Octanorm system walls, 34 cm red fascia panel with company's name and standing out booth number. Carpet color is grey.

- 2 Lockable information counters
- 2 Barstools
- 2 Round discussion tables
- 4 Black Shared Acrylic Chairs
- 2 Waste paper baskets
- 2 Free-standing coat hangers
- 2 13amp/220V power point/3-pin multiplugs
- 6 100W longarm spotlights

- * Digital print RMB 140/sqm
- * Digital print on PVC RMB 205/sqm (max high 2.5mH)



Top View



Front View



814 Grey



Row Premium Shell Scheme

9 sqm

USD 5,750

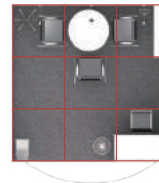
The Premium Shell Scheme includes the following: Octanorm System walls, 50cm curved fascia board with company's name and standing out booth number. Carpet color is grey.

- 1 Lockable information counter, 100 x 50 x 100 cm white
- 1 Barstool
- 1 Round discussion table height: 75 cm
- 3 Black Leather Armchairs
- 1 Waste paper basket
- 1 Brochures rack
- 1 Slope shelf
- 1 Free-standing coat hanger
- 1 13amp/220V power point/3-pin multiplug
- 3 100W longarm spotlights
- 1 digital print on front counter (exhibitor's logo or graphic)

- * Digital print RMB 140/sqm
- * Digital print on PVC RMB 205/sqm (max high 2.5mH)



Top View



Front View



814 Grey



Row Premium Shell Scheme

18 sqm

USD 11,500

The Premium Shell Scheme includes the following: Octanorm System walls, 50cm curved fascia board with company's name and standing out booth number. Carpet color is grey.

- 2 Lockable information counters, 100 x 50 x 100 cm white
- 2 Barstools
- 2 Round discussion tables height: 75 cm
- 6 Black Leather Armchairs
- 2 Waste paper baskets
- 2 Brochures racks
- 2 Slope shelves
- 2 Free-standing coat hangers
- 2 13amp/220V power point/3-pin multiplugs
- 6 100W longarm spotlights
- 2 digital print on front counters (exhibitor's logo or graphic)

- * Digital print RMB 140/sqm
- * Digital print on PVC RMB 205/sqm (max high 2.5mH)



Top View



Front View



814 Grey



Corner Basic Shell Scheme

9 sqm

USD 5,000

The Corner Basic Shell Scheme includes the following:

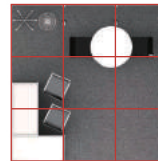
Octanorm system walls, 34 cm red fascia panel with company's name and standing out booth number. Carpet color is grey.

- 2 Lockable information counters
- 2 Barstools
- 1 Round discussion table
- 2 Black Shared Acrylic Chairs
- 1 Waste paper basket
- 1 Free-standing coat hanger
- 1 13amp/220V power point/3-pin multiplug
- 3 100W longarm spotlights

- * Digital print RMB 140/sqm
- * Digital print on PVC RMB 205/sqm (max high 2.5mH)



Top View



Front View



814 Grey



Corner Basic Shell Scheme

18 sqm

USD 10,000

The Corner Basic Shell Scheme includes the following:

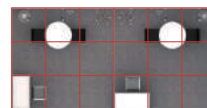
Octanorm system walls, 34 cm red fascia panel with company's name and standing out booth number. Carpet color is grey.

- 2 Lockable information counters
- 2 Barstools
- 2 Round discussion tables
- 4 Black Shared Acrylic Chairs
- 2 Waste paper baskets
- 2 Free-standing coat hangers
- 2 13amp/220V power point/3-pin multiplugs
- 6 100W longarm spotlights

- * Digital print RMB 140/sqm
- * Digital print on PVC RMB 205/sqm (max high 2.5mH)



Top View



Front View



814 Grey



Corner Basic Shell Scheme

27 sqm

USD 15,000

The Corner Basic Shell Scheme includes the following:

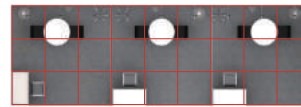
Octanorm system walls, 34 cm red fascia panel with company's name and standing out booth number. Carpet color is grey.

- 3 Lockable information counters
- 3 Barstools
- 3 Round discussion tables
- 6 Black Shared Acrylic Chairs
- 3 Waste paper baskets
- 3 Free-standing coat hangers
- 3 13amp/220V power point/3-pin multiplugs
- 9 100W longarm spotlights

- * Digital print RMB 140/sqm
- * Digital print on PVC RMB 205/sqm (max high 2.5mH)



Top View



814 Grey



Front View



Corner Basic Shell Scheme

36 sqm

USD 20,000

The Corner Basic Shell Scheme includes the following:

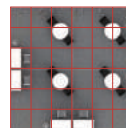
Octanorm system walls, 34 cm red fascia panel with company's name and standing out booth number. Carpet color is grey.

- 4 Lockable information counters
- 4 Barstools
- 4 Round discussion tables
- 8 Black Shared Acrylic Chairs
- 4 Waste paper baskets
- 4 Free-standing coat hangers
- 4 13amp/220V power point/3-pin multiplugs
- 12 100W longarm spotlights

- * Digital print RMB 140/sqm
- * Digital print on PVC RMB 205/sqm (max high 2.5mH)



Top View



Front View



814 Grey



Corner Premium Shell Scheme

9 sqm

USD 6,350

The Corner Premium Shell Scheme includes the following:

Octanorm System walls, 50cm curved fascia board with company's name and standing out booth number. Carpet color is grey.

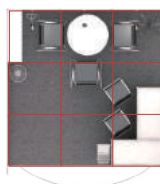
- 2 Lockable information counters, 100 x 50 x 100 cm white
- 2 Barstools
- 1 Round discussion table height: 75 cm
- 3 Black Leather Armchairs
- 1 Waste paper basket
- 1 Brochures rack
- 1 Slope shelf
- 1 Free-standing coat hanger
- 1 13amp/220V power point/3-pin multiplug
- 3 100W longarm spotlights
- 1 digital print on front counter (exhibitor's logo or graphic)

* Digital print RMB 140/sqm

* Digital print on PVC RMB 205/sqm (max high 2.5mH)



Top View



Front View



814 Grey



Corner Premium Shell Scheme

18 sqm

USD 12,700

The Corner Premium Shell Scheme includes the following:

Octanorm System walls, 50cm curved fascia board with company's name and standing out booth number. Carpet color is grey.

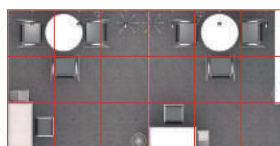
- 2 Lockable information counters, 100 x 50 x 100cm white
- 2 Barstools
- 2 Round discussion tables height: 75 cm
- 6 Black Leather Armchairs
- 2 Waste paper baskets
- 2 Brochures racks
- 2 Slope shelves
- 2 Free-standing coat hangers
- 2 13amp/220V power point/3-pin multiplugs
- 6 100W longarm spotlights
- 2 digital print on front counters (exhibitor's logo or graphic)

* Digital print RMB 140/sqm

* Digital print on PVC RMB 205/sqm (max high 2.5mH)



Top View



814 Grey



Front View



Corner Premium Shell Scheme

27 sqm

USD 19,050

The Corner Premium Shell Scheme includes the following:

Octanorm System walls, 50cm curved fascia board with company's name and standing out booth number. Carpet color is grey.

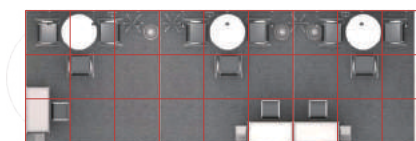
- 3 Lockable information counters, 100 x 50 x 100 cm white
- 3 Barstools
- 3 Round discussion tables height: 75 cm
- 9 Black Leather Armchairs
- 3 Waste paper baskets
- 3 Brochures racks
- 3 Slope shelves
- 3 Free-standing coat hangers
- 3 13amp/220V power point/3-pin multiplugs
- 9 100W longarm spotlights
- 3 digital print on front counters (exhibitor's logo or graphic)

- * Digital print RMB 140/sqm
- * Digital print on PVC RMB 205/sqm (max high 2.5mH)



Top View

814 Grey



Front View



Corner Premium Shell Scheme

36 sqm

USD 25,400

The Corner Premium Shell Scheme includes the following:

Octanorm System walls, 50cm curved fascia board with company's name and standing out booth number. Carpet color is grey.

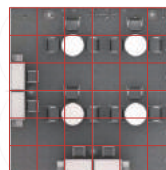
- 4 Lockable information counters, 100 x 50 x 100 cm white
- 4 Barstools
- 4 Round discussion tables height: 75 cm
- 12 Black Leather Armchairs
- 4 Waste paper baskets
- 4 Brochures racks
- 4 Slope shelves
- 4 Free-standing coat hangers
- 4 13amp/220V power point/3-pin multiplugs
- 12 100W longarm spotlights
- 4 digital print on front counters (exhibitor's logo or graphic)

- * Digital print RMB 140/sqm
- * Digital print on PVC RMB 205/sqm (max high 2.5mH)



Top View

Front View



814 Grey



Peninsula Basic Shell Scheme

27 sqm

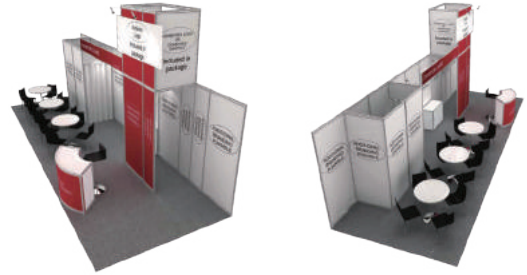
USD 17,350

27sqm Peninsula Basic Shell Scheme includes the following:

Octanorm system walls, 34 cm red fascia panel with company's name and standing out booth number. Carpet color is grey.

- 1 1mht Curve Info Desk
- 1 Barstool
- 3 Round discussion tables
- 12 Black Shared Acrylic Chairs
- 1 Lockable cabinet
- 1 Waste paper basket
- 3 13amp/220V power point/3-pin multiplugs
- 6 100W longarm spotlights

- * Digital print RMB 140/sqm
- * Digital print on PVC RMB 205/sqm (max high 2.5mH)



Top View



Front View



814 Grey



Peninsula Basic Shell Scheme

36 sqm

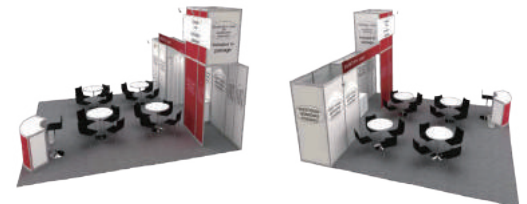
USD 23,150

36sqm Peninsula Basic Shell Scheme includes the following:

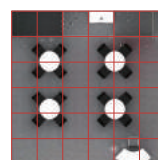
Octanorm system walls, 34 cm red fascia panel with company's name and standing out booth number. Carpet color is grey.

- 1 1mht Curve Info Desk
- 1 Barstool
- 4 Round discussion tables
- 16 Black Shared Acrylic Chairs
- 1 Lockable cabinet
- 1 Waste paper basket
- 3 13amp/220V power point/3-pin multiplugs
- 6 100W longarm spotlights

- * Digital print RMB 140/sqm
- * Digital print on PVC RMB 205/sqm (max high 2.5mH)



Top View



Front View



814 Grey



Peninsula Basic Shell Scheme

54 sqm

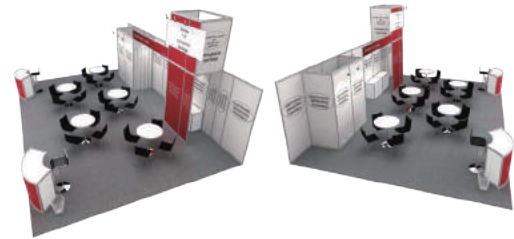
USD 34,700

54sqm Peninsula Basic Shell Scheme includes the following:

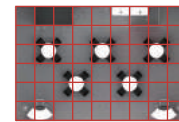
Octanorm system walls, 34 cm red fascia panel with company's name and standing out booth number. Carpet color is grey.

- 2 1mht Curve Info Desks
- 2 Barstools
- 5 Round discussion tables
- 20 Black Shared Acrylic Chairs
- 2 Lockable cabinets
- 2 Waste paper baskets
- 6 13amp/220V power point/3-pin multiplugs
- 12 100W longarm spotlights

- * Digital print RMB140/sqm
- * Digital print on PVC RMB 205/sqm (max high 2.5mH)



Top View



Front View



814 Grey



Peninsula Premium Shell Scheme

27 sqm

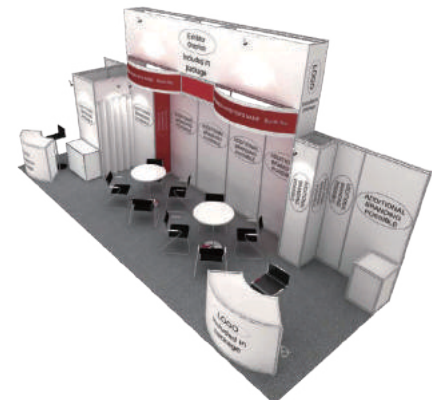
USD 21,850

27sqm Peninsula Premium Shell Scheme includes the following:

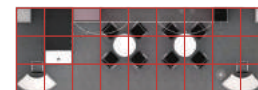
Octanorm System walls, 50cm curved fascia board with company's name and standing out booth number. Carpet color is grey.

- 2 1mht Curve Info Desks
- 2 Barstools
- 2 Round discussion tables
- 8 Black Leather Armchairs
- 2 Lockable cabinets
- 1 Waste paper basket
- 3 13amp/220V power point/3-pin multiplugs
- 6 100W longarm spotlights
- 2 Display Plinths 500l×500w×800mmh

- * Digital print RMB140/sqm
- * Digital print on PVC RMB 205/sqm (max high 2.5mH)



Top View



Front View



814 Grey



Peninsula Premium Shell Scheme

36 sqm

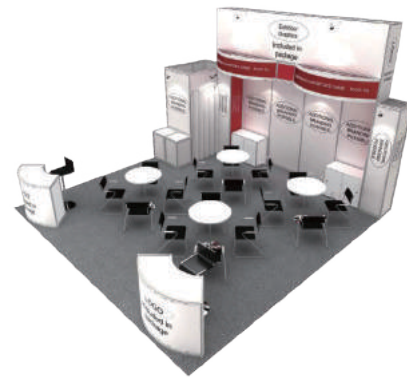
USD 29,150

36sqm Peninsula Premium Shell Scheme includes the following:

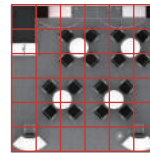
Octanorm System walls, 50cm curved fascia board with company's name and standing out booth number. Carpet color is grey.

- 2 1mht Curve Info Desks
- 2 Barstools
- 4 Round discussion tables
- 16 Black Leather Armchairs
- 2 Lockable cabinets
- 1 Waste paper basket
- 4 13amp/220V power point/3-pin multiplugs
- 8 100W longarm spotlights
- 2 Display Plinths 500l×500w×800mmh

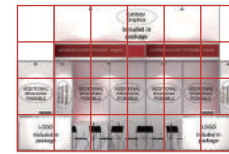
- * Digital print RMB 140/sqm
- * Digital print on PVC RMB 205/sqm (max high 2.5mH)



Top View



Front View



814 Grey



Peninsula Premium Shell Scheme

54 sqm

USD 43,700

54sqm Peninsula Premium Shell Scheme includes the following:

Octanorm System walls, 50cm curved fascia board with company's name and standing out booth number. Carpet color is grey.

- 2 1mht Curve Info Desks
- 2 Barstools
- 5 Round discussion tables
- 20 Black Leather Armchairs
- 2 Lockable cabinets
- 2 Waste paper baskets
- 6 13amp/220V power point/3-pin multiplugs
- 12 100W longarm spotlights
- 2 Display Plinths 500l×500w×800mmh

- * Digital print RMB140/sqm
- * Digital print on PVC RMB 205/sqm (max high 2.5mH)



Top View



Front View



814 Grey



Island Premium Shell Scheme

36 sqm

USD 33,500

36sqm Island Premium Shell Scheme includes the following:

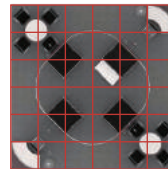
Octanorm System walls, 50cm curved fascia board with company's name and standing out booth number. Carpet color is grey.

- 2 1mht Curve Info Desks
- 2 Barstools
- 2 Round discussion tables
- 8 Black Leather Armchairs
- 1 Lockable cabinet
- 2 Waste paper baskets
- 4 13amp/220V power point/3-pin multiplugs
- 4 100W longarm spotlights

- * Digital print RMB 140/sqm
- * Digital print on PVC RMB 205/sqm (max high 2.5mH)



Top View



Front View



814 Grey



Island Premium Shell Scheme

54 sqm

USD 50,250

54sqm Island Premium Shell Scheme includes the following:

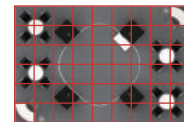
Octanorm System walls, 50cm curved fascia board with company's name and standing out booth number. Carpet color is grey.

- 2 1mht Curve Info Desks
- 2 Barstools
- 4 Round discussion tables
- 16 Black Leather Armchairs
- 1 Lockable cabinet
- 2 Waste paper baskets
- 6 13amp/220V power point/3-pin multiplugs
- 6 100W longarm spotlights

- * Digital print RMB140/sqm
- * Digital print on PVC RMB 205/sqm (max high 2.5mH)



Top View

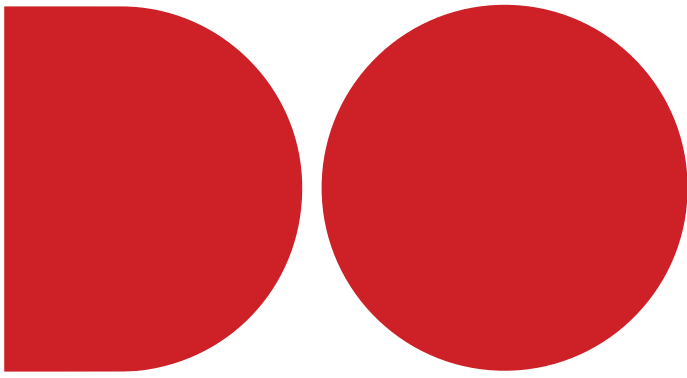


Front View



814 Grey





SHAPE THE TRAVEL INDUSTRY. **TOGETHER.**



ITB
BERLIN

No.1 Trade Show For The Global Travel Market

5-7 March 2024, Berlin
itb-berlin.com



ITB
CHINA

The Leading B2B-Exclusive Trade Show For The
Chinese Travel Market

27-29 May 2024, Shanghai
itb-china.com



ITB
INDIA

Gateway To The Indian Travel Market

11-13 September 2024, Mumbai
itb-india.com



ITB
ASIA

The Leading B2B Trade Show For The Entire
Asian Travel Market

23-25 October 2024, Singapore
itb-asia.com